

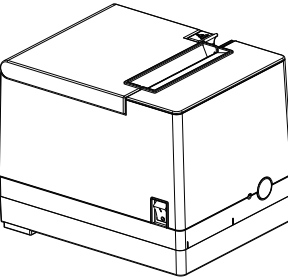


Fast Installation Guide

Thermal Receipt Printer

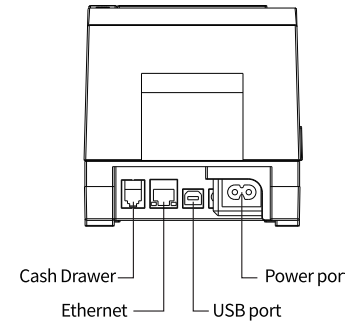
(This guide uses one model as an example.)

Product View:



Printer connection:

- a. Connect adaptor power core to the power socket.
- b. Connect interface cable into ports in the back.
- c. Connect cash drawer to the cash drawer port.

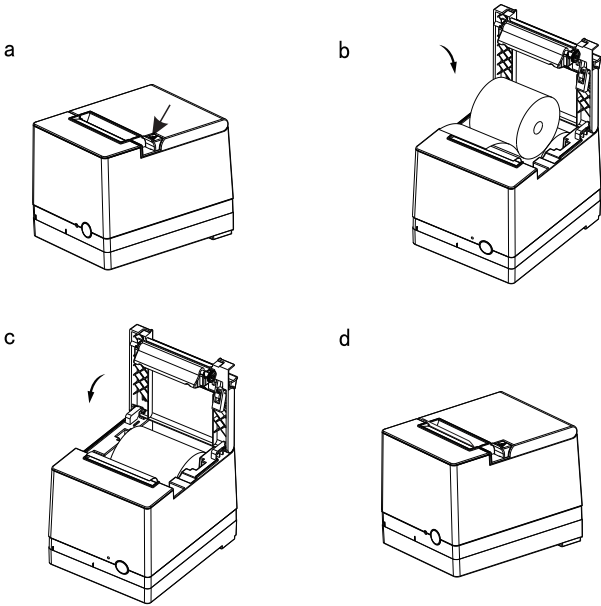


Remarks:

The interface and appearance of the printer will vary depending on different model. The actual interface and appearance are subject to the model you purchased.

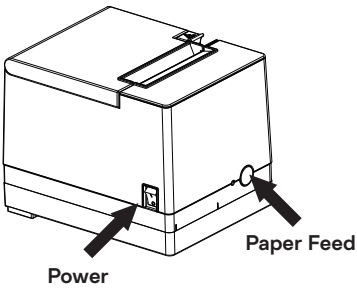
Install the paper roll

- a. Press the button to open the top cover.
- b. Install the paper roll into the printer.
- c. Pull out some paper outside the printer
- d. Close the top cover



- Specifications, accessories, parts and procedures are subject to the actual machine, subject to change without prior notice.

Print seft-test page



- Pulg in the power cable.
- Press and hold the paper Feed Button,turn on the power switch at the same time.
- Release after 4 seconds,print seft-test page.

Technical Parameters

Print method		Direct thermal Line
Print head resolution		203dpi
Print speed		200mm/s
Print width		72mm(max)
Print Command		Compatible with ESC/POS
Interface	Standard	USB+Ethernet USB+Ethernet+Cash drawer
Character Size		ANK Font; Font A: 12×24dots; Font B: 9×17dots Chinese Character: 24×24dots
Barcode mode		UPC-A/UPC-E/JAN13(EAN13)/JAN8(EAN8)/ITF/CODABAR/ CODE39/CODE93/CODE128/QRCODE
Character set		GB18030 simplified Chinese
Reliability		Mechanism: 150km; Auto Cutter: 1.5 million cuts
Paper thickness		0.06~0.08mm
Auto cutter		Semi-cut
Power supply		DC 24V/1.25A
Cashdrawer out		DC 24V/0.5A
Work environment		Temperature : 5°C~40°C, Humidity : 20%~90%
Storage environment		Temperature : -25°C~55°C, Humidity : 20%~93%

- Warning:** This product is an A-level product. In a residential environment, running this equipment may cause Radio jamming.
- Warning:** Sharp edges, can not touch.
- Warning:** Overheat parts! Touching this component can burn your fingers. After turning off the power, wait for half an hour before touching the component.

Certificate



Warranty Card

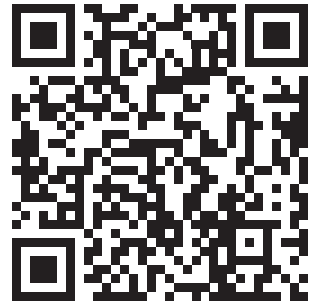
Product Model	
User' s Name	
User' s Add.	
Date of Purchase	
User' s Contact	
Distributor Name	
Distributor Add.	
Machine Fault Description:	

Note: Please keep the warranty card properly for after-sale maintenance.

After-Sales Service

Thermal Receipt Printer

(This user manual supports 80 series models, and takes one model as an example.)



Scan the QR code to download the driver, manual, and user guide video, or visit the official website to download them
<https://www.union-tec.com/80v/>



Warranty clause

Warranty scope and period

1. Warranty is limited to defects in material and workmanship.
2. The warranty period is calculated from the date of invoice to the Customer or, if the Customer is not able to provide the proof of invoice, then the date of shipment.
3. Warranty period:
 - a. Printer: 12 months
 - b. Print head: 12 months or 50KM whichever comes first

Warranty service principles

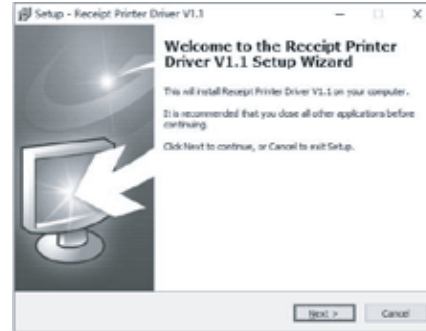
1. Free warranty for products during the warranty period and in warranty scope.
2. A warranty card is required for repairs of printer.
3. Beyond the warranty period, certain maintenance cost will be charge.
4. The warranty is invalid if disassembly or repairs by non technical engineers.
5. The repair printer must be packaged in its original packaging or in a package with considerable protection. It is not under the warranty if damage caused by shipping package.

Non-warranty clause

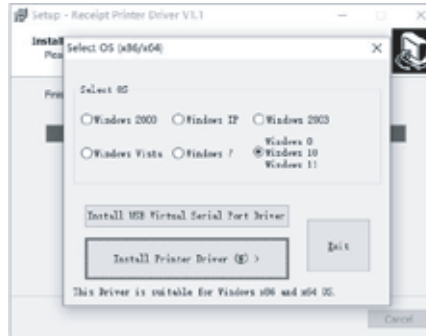
1. No warranty card or contents of warranty card have been altered.
2. Defects or damage caused by improper maintenance.
3. Damage caused by water or has objects.
4. Damage of print head caused by the use of excessive thickness of media.
5. Damage of print head caused by use of inferior consumables.
6. Defects or damage from improper operation or force majeure.
7. Use the printer for other purposes beyond scope of use.
8. Damage caused by repairs by non technical engineers.

Driver Installation

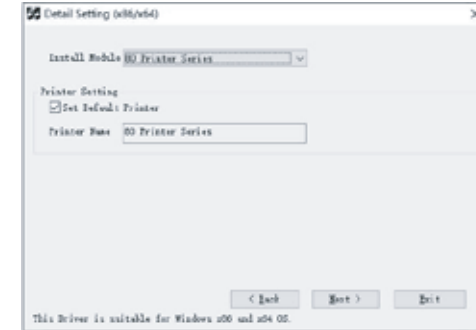
a. Double click to open the driver zip folder via download and open the printer driver click next.



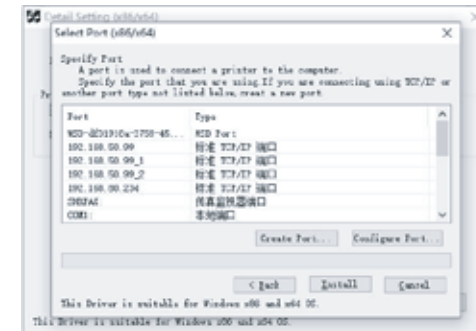
b. Select the system that matches your computer and click install Printer Driver (N) when you are done.



c. Select the corresponding printer model, select the correct one and click next.



c. Select the appropriate printer port and click Instll.



The restriction of the use of certain hazardous substances in electrical and electronic equipment

1. Name and content of hazardous substances in products :

Item	Toxic and hazardous substances or elements					
	Pb	Hg	Cd	Cr6+	PBB	PBDE
Power supply / electrical components	×	○	○	○	○	○
Print head	×	○	○	○	○	○
Metal parts	×	○	○	○	○	○
Motherboard	×	○	○	○	○	○
Cable	×	○	○	○	○	○
Packaging and accessories	○	○	○	○	○	○

This table is made in compliance with SJ/T11364 regulations.
O: Indicates that this toxic or hazardous substances contained in all the homogeneous materials for this part, according to GB/T26572 is within the limit requirement.
X: Indicates that this toxic or hazardous substances contained in all the homogeneous materials for this part, according to GB/T26572 is over the limit requirement.

2. Restricted use signs for hazardous substances in electronic and electrical products :



All electrical and electronic products sold in the People's Republic of China must be marked with this symbol, and the number used in the symbol represent the environmentally friendly use period of electronic and electrical products under normal use condition.